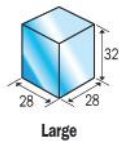




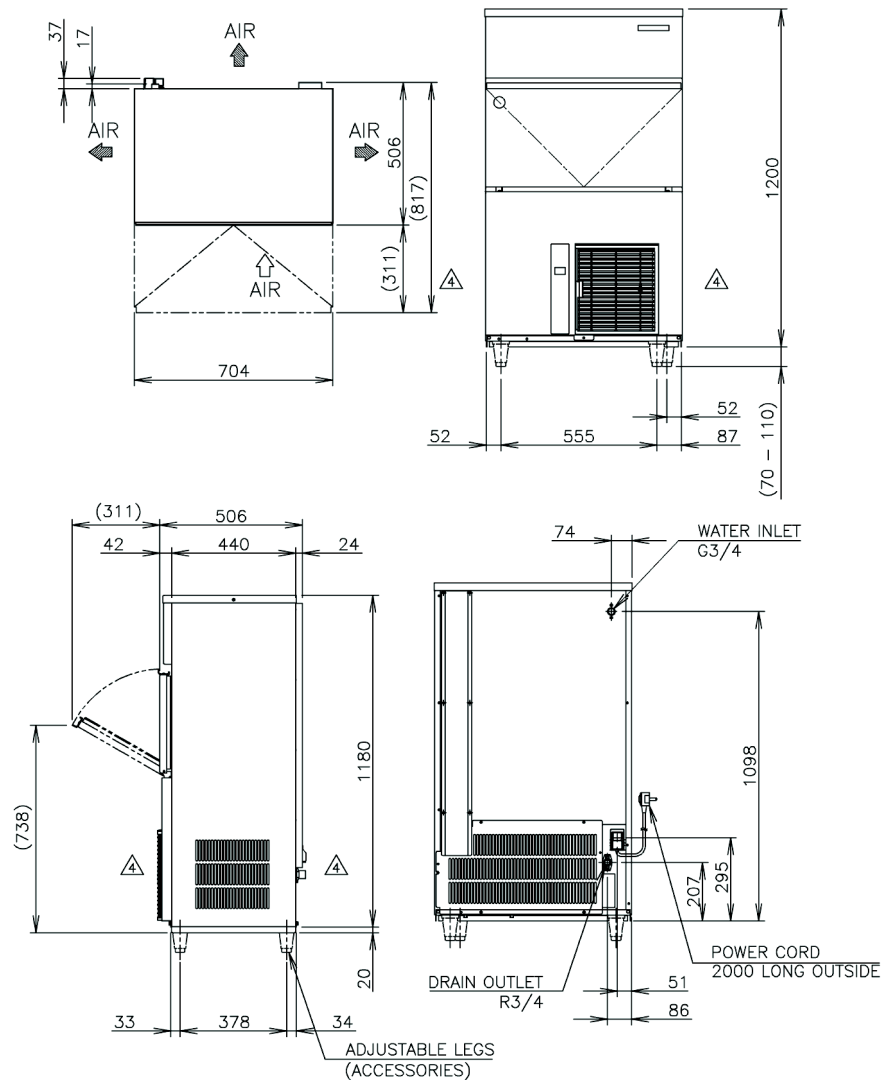
PRODUCT FEATURES

- New intelligent control circuit dedicated to saving power and water consumption.
- Micro computer controller controls ice making process to work at peak performance in any conditions.
- Inbuilt safety features - freeze cycle back up timer, defrost back up, low voltage & high amp protector.
- New 7 segment operational display panel for ease of use.
- Unique closed cell water circuit for ultimate contamination protection.
- Durable Stainless Steel Exterior.
- Easily accessible & cleanable air filters reduce costly callouts.
- Exceptionally hard crystal clear cubes that melt slowly.
- Auto rinse and flush cycle.
- 3-year parts & labour warranty on entire unit, 5 years (parts only) on compressor & air-cooled condenser coil.

CUBE SIZE:



TECHNICAL DRAWING



PRODUCT SPECIFICATION

Production Capacity per 24hours	Approx. 117kg @10°C Air temp; 10°C Water Approx. 104kg @21°C Air temp; 15°C Water Approx. 88kg @32°C Air temp; 21°C Water
Max Storage Capacity	Approx. 50kg
Freeze Cycle Time	Approx. 22 Min
Ice Production Per cycle	Approx. 1.8kg/80pcs
Dimensions	704mm (W) x 506mm (D) x 1270mm (H) (Units include adjustable legs 70-110mm)
Cooling	Air
Weight Net/Gross (kg)	76 / 85
AC Supply Voltage	1 PHASE 220-240V 50Hz
Amperage	Running: 4.5A Rated: 4.5A Starting: 19A
Refrigerant Charge	R404A / 380g
Operating Conditions	Ambient Temp.: 1-40°C Water Supply Temp.: 5-35°C Water Supply Pressure: 0.07-0.8MPa (0.7-8bar) Voltage Range: Rated Voltage ±6%



Descriptions and specifications are subject to change at any time, without notice. Illustrations for demonstration purposes.

Copyright © 2019 Hoshizaki Lancer Pty Ltd. All right reserved. E&OE Date: May 2019