



# HOSHIZAKI

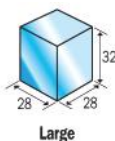
## IM-240ANE-28

Cube Ice Maker

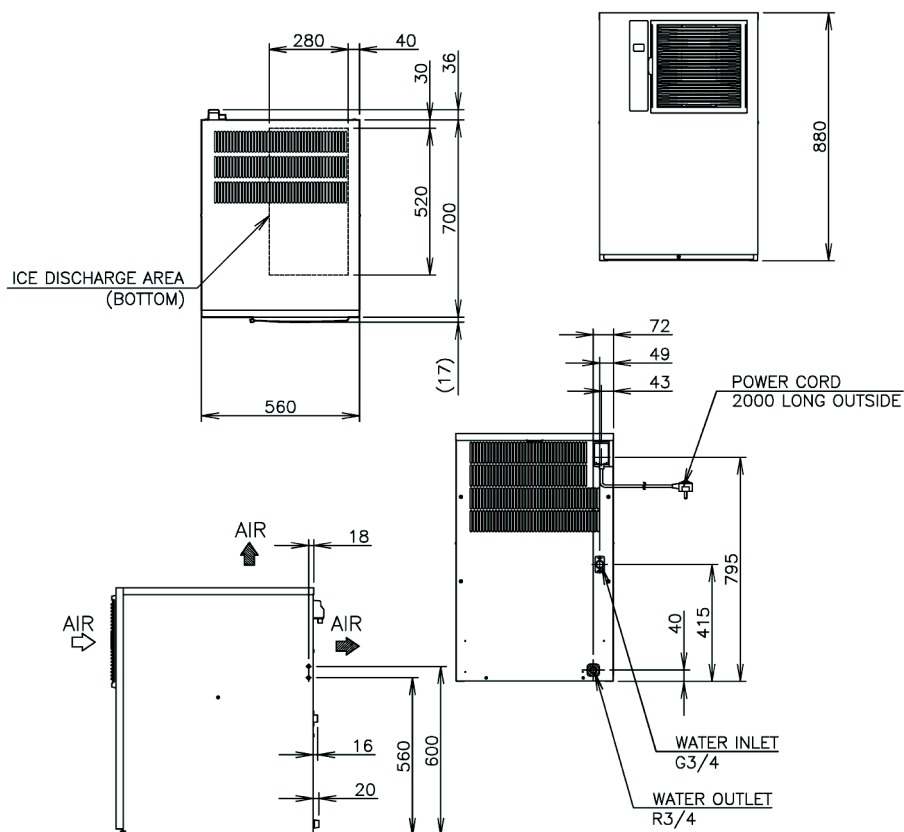
### PRODUCT FEATURES

- New intelligent control circuit dedicated to saving power and water consumption.
- Micro computer controller controls ice making process to work at peak performance in any conditions.
- Inbuilt safety features - freeze cycle back up timer, defrost back up, low voltage and high amp protector.
- New 7 segment operational display panel for ease of use.
- Unique closed cell water circuit for ultimate contamination protection.
- Durable stainless steel exterior.
- Easily accessible and cleanable air filters reduce costly callouts.
- Exceptionally hard crystal clear cubes that melt slowly.
- Auto rinse and flush cycle.
- 3 year parts and labour warranty on entire unit, 5 year (parts only) on compressor & air cooled condenser coil.

CUBE SIZE:



### TECHNICAL DRAWING



### PRODUCT SPECIFICATION

Production Capacity per 24hours	Approx. 220kg @10°C Air temp; 10°C Water Approx. 205kg @21°C Air temp; 15°C Water Approx. 160kg @32°C Air temp; 21°C Water
Max Storage Capacity	Select Bin & Kit
Freeze Cycle Time	Approx. 20 Min
Ice Production Per cycle	Approx. 3.2kg/140pcs
Dimensions	560mm (W) x 700mm (D) x 880mm (H)
Cooling	Air
Weight Net/Gross (kg)	80 / 95
AC Supply Voltage	1 PHASE 220-240V 50Hz
Amperage	Running: 6.6A Rated: 6.6A Starting: 35A
Refrigerant	R404A / 480g
Ambient Temp	1-40°C
Operating Conditions	Water Supply Temp.: 5-35°C Water Supply Pressure: 0.07-0.8MPa (0.7-8bar) Voltage Range: Rated Voltage ±6%
Double Production Capacity	Achieved by stacking 2 units side by side. For pricing please contact your Hoshizaki Sales Rep.



Descriptions and specifications are subject to change at any time, without notice. Illustrations for demonstration purposes.

Copyright © 2019 Hoshizaki Lancer Pty Ltd. All right reserved. E&OE Date: May 2019