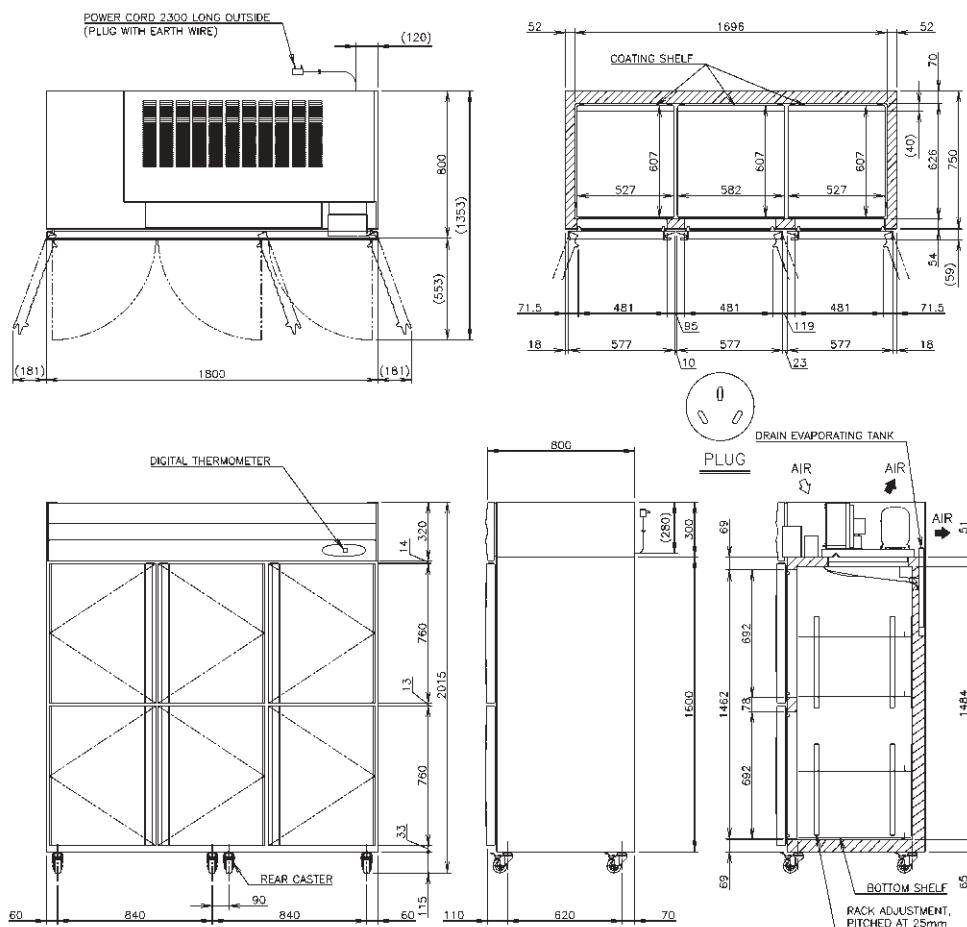


## PRODUCT FEATURES

- Split doors on Upright series.
- Stainless steel interior and exterior.
- Programmable electronic controller and display.
- Standard with 12 x shelves.
- 2 years parts and labour warranty.
- Comes standard with 6 x lockable (115 mm) castors (not legs).
- Optional Adjustable legs 150 - 180mm (Sold separately).

## TECHNICAL DRAWING



## PRODUCT SPECIFICATION

|                          |   |
|--------------------------|---|
| Interior                 | Stainless Steel,ABS plastic (Door),                       |
| Exterior                 | Stainless Steel, Galvanized Steel (Rear, Bottom)          |
| Capacity                 | 1600L   |
| Temperature Control      | Microprocessor adjustable<br>from -23°C to -7°C           |
| Evaporator               | Fin & Tube type   |
| Outside Dimensions       | 1800mm (W) x 800mm (D) x 2015mm (H)                       |
| Inside Dimensions        | 1696mm (W) x 626mm (D) x 1484mm (H)                       |
| Refrigeration System     | Forced Air Circulation                                    |
| Weight Net/Gross (kg) AC | 203 / 245   |
| Supply Voltage           | 1 PHASE 220 - 240V 50Hz                                   |
| Amperage                 | Rated: 4.60A Starting: 23.4A                              |
| Refrigerant              | R404A / 340g  |
| Operating Conditions     | Ambient Temp.: 5-43°C<br>Voltage Range: Rated Voltage ±6% |