



HOSHIZAKI

KM-590DJ-S

Crescent Ice Maker - Modular

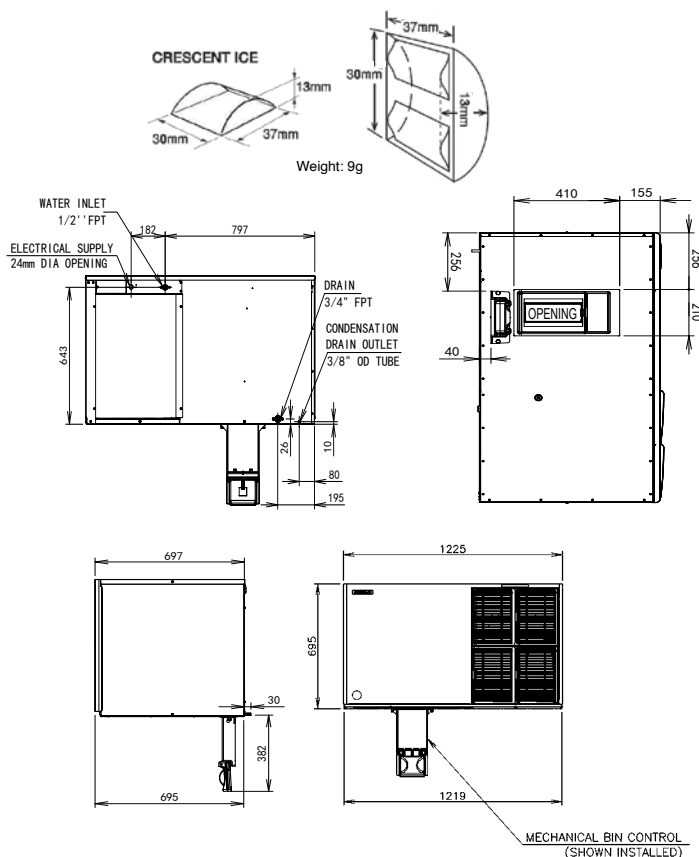
Model Number: 91000909

PRODUCT FEATURES

- Individually shaped crescent ice.
- Protected by HoshiGuard Antimicrobial Agent.
- CycleSaver® technology includes a double-sided evaporator, uniquely crafted in stainless steel, which produces ice on both sides, resulting in more ice in less amount of time.
- EverCheck™ Control Board with audible alarm and diagnostic features, designed to assist service technicians in diagnosing problems.
- Durable stainless steel exterior.
- Easily removable & cleanable air filters on front panel.
- Ice storage bin, top kit and water filter sold separately.



TECHNICAL DRAWING



PRODUCT SPECIFICATION

Production Capacity / 24hrs	Approx. 590kg @ 21°C Air temp; 15°C Water Approx. 500kg @ 32°C Air temp; 21°C Water
Recommended Storage Bins	B-801SA, B-1300SS, B-1500SS
Freeze Cycle Time	Approx. 28 Min (At. 21°C Air ; 15°C Water)
Ice Production / cycle	Approx. 12.9kg/1,440pcs
Dimensions	1,219mm (W) x 695mm (D) x 695mm (H)
Cooling	Air
Weight Net/Gross (kg)	136/160
AC Supply Voltage	1 PHASE 220-240V 50Hz / 15amp Plug
Amperage	Running: 11.35A
Refrigerant Charge	R404A
Operating Conditions:	
Ambient Temp.	7-38°C
Water Supply Temp.	7-32°C
Water Supply Pressure	0.07-0.078MPa (0.7-7.8bar)
Voltage Range	198-254V
Electrical consumption	2,080W (AT. 32°C; WT 21°C)
Water Consumption / 24hrs	Approx. 1.15m3/d (AT. 21°C ; WT 15°C)
Compatible Water Filter	HLF32 Twin Filter System (sold separately)

INSTALLATION REQUIREMENTS

- Qualified plumber required for installation.
- Included accessories & fittings pack can be found behind front panel.
- Allow 15cm clearance at rear, sides and top for proper air circulation and ease of maintenance.
- Install bin control switch according to installation manual.
- Hoshizaki recommends the use of a compatible water filter to prevent non-warrantable scale & sediment complications.

*Refer to manual for full installation & maintenance requirements.



For free 6 month extended warranty, register online within 4 weeks of purchase date.

hoshizaki.com.au

